



Swiss TPH

Swiss Tropical and Public Health Institute  
Schweizerisches Tropen- und Public Health-Institut

ICRC

# ALMANACH FACTSHEET

## BACKGROUND



Nigeria has one of the highest under-5 mortality rates in the world attributed mostly to poor access to quality health services. The conflict in the northeast has had a devastating impact on the healthcare system in the region.



As the closest unit of care at the community level, primary healthcare centres have the potential to provide quality care to communities when provided with technical guidance and other forms of support. In Adamawa state over **800,000 children** under 5 need essential health service. This is where health care workers do their consultations using the ALMANACH tool.

## THE PROJECT



The International Committee of the Red Cross (ICRC), the Swiss Tropical and Public Health Institute (SWISS TPH) and the Adamawa State Primary Health Care Development Agency (ADSPHCDA) launched a project to improve the quality of case management for the health needs of children under five. Adamawa State is the pilot state of implementation. The Adamawa State Primary Health Care Development Agency is the lead unit for primary health care under the supervision of the State's Ministry of Health.

## WHAT IS ALMANACH?

The **ALMANACH** (Algorithm for the **Management of Childhood Illness**) is an innovative, user-friendly mobile application that provides real-time and context-specific support for clinical decision-making. It builds on the WHO's "Integrated Management of Childhood Illness (IMCI)" concept, basing its algorithms on IMCI but expanding its clinical coverage and allowing more adaptability to the local context.

The ALMANACH project contributes to the ICRC's broader objective of improving access to quality curative and preventive care to civilians living in areas affected by armed conflict or other situations of violence.

## HOW IT WORKS

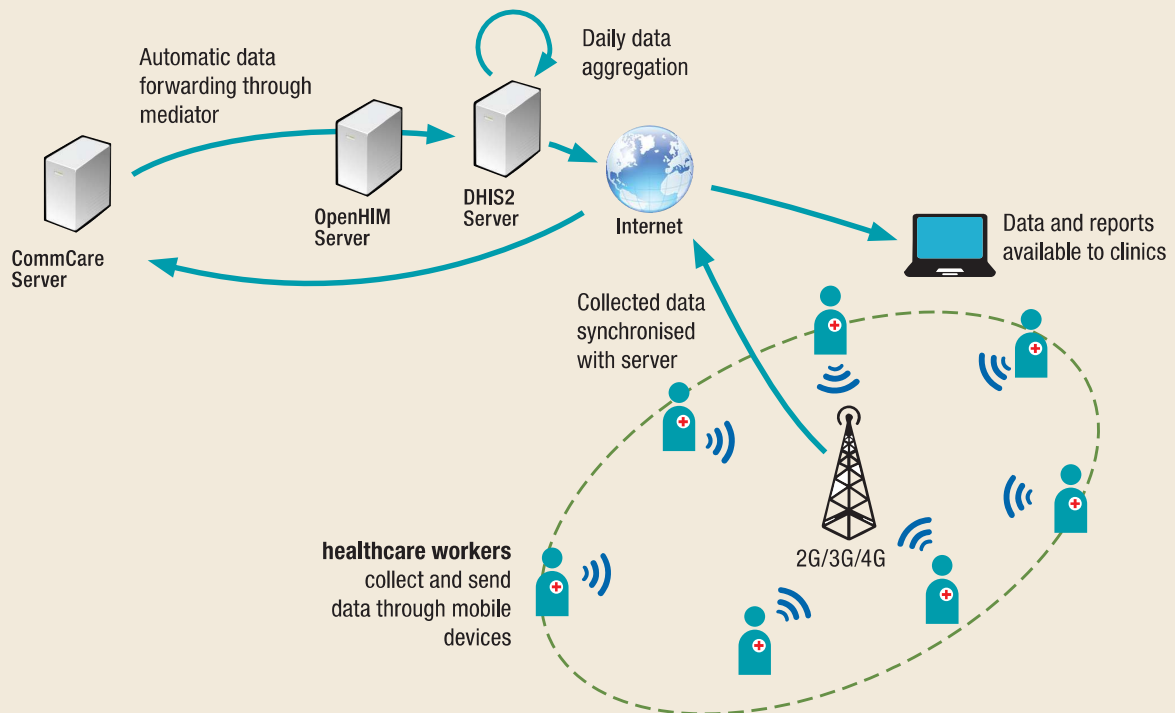
The ALMANACH is installed on mobile devices (e.g. tablets) and guides healthcare staff step-by-step through a structured consultation to ensure that all relevant information is obtained and recorded. The app prompts request for a lab test when needed. It also includes nutrition assessment and



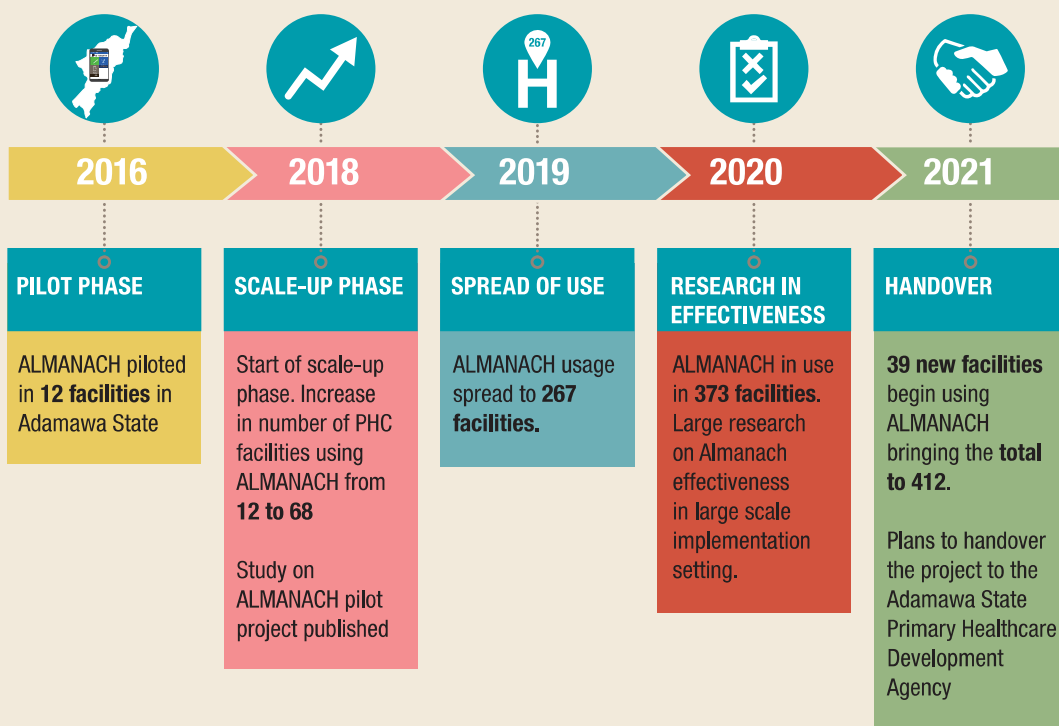
guides the healthcare workers to check routine preventive action (e.g.: deworming, vitamin A, etc.). The tool ensures that health workers adhere to clinically approved protocols.

At the end of the consultation, based on the medical data entered into the application, a likely diagnosis is provided, along with the corresponding treatment (including calculated dosages), need for follow-up visits, and other recommendations tailored to the patient’s medical case as well as the locally available resources.

## ALMANACH SYSTEM ARCHITECTURE



## TIMELINE TILL DATE



# SUCCESSSES

In 2020, a large-scale scientific study conducted by the Swiss TPH, ICRC and the Adamawa SPHCDA **found substantial improvements** in facilities using ALMANACH when compared to facilities where the tool was not in use.



The odds of children recovering from acute disease when treated in a health center with ALMANACH is 2.6 times higher compared to a treatment in a facility without ALMANACH



ALMANACH improves the detection of critical cases that require referral to secondary level facilities. This results in almost four-fold higher referral rates compared to facilities without the tool.



The odds of parents/caregivers of children receiving clear follow-up advice when treated in a health center with ALMANACH is 2.8 times higher compared to a treatment in a facility without



Higher detection of cases of malnutrition as malnutrition screening is conducted for over 95% of children visiting the PHC facilities



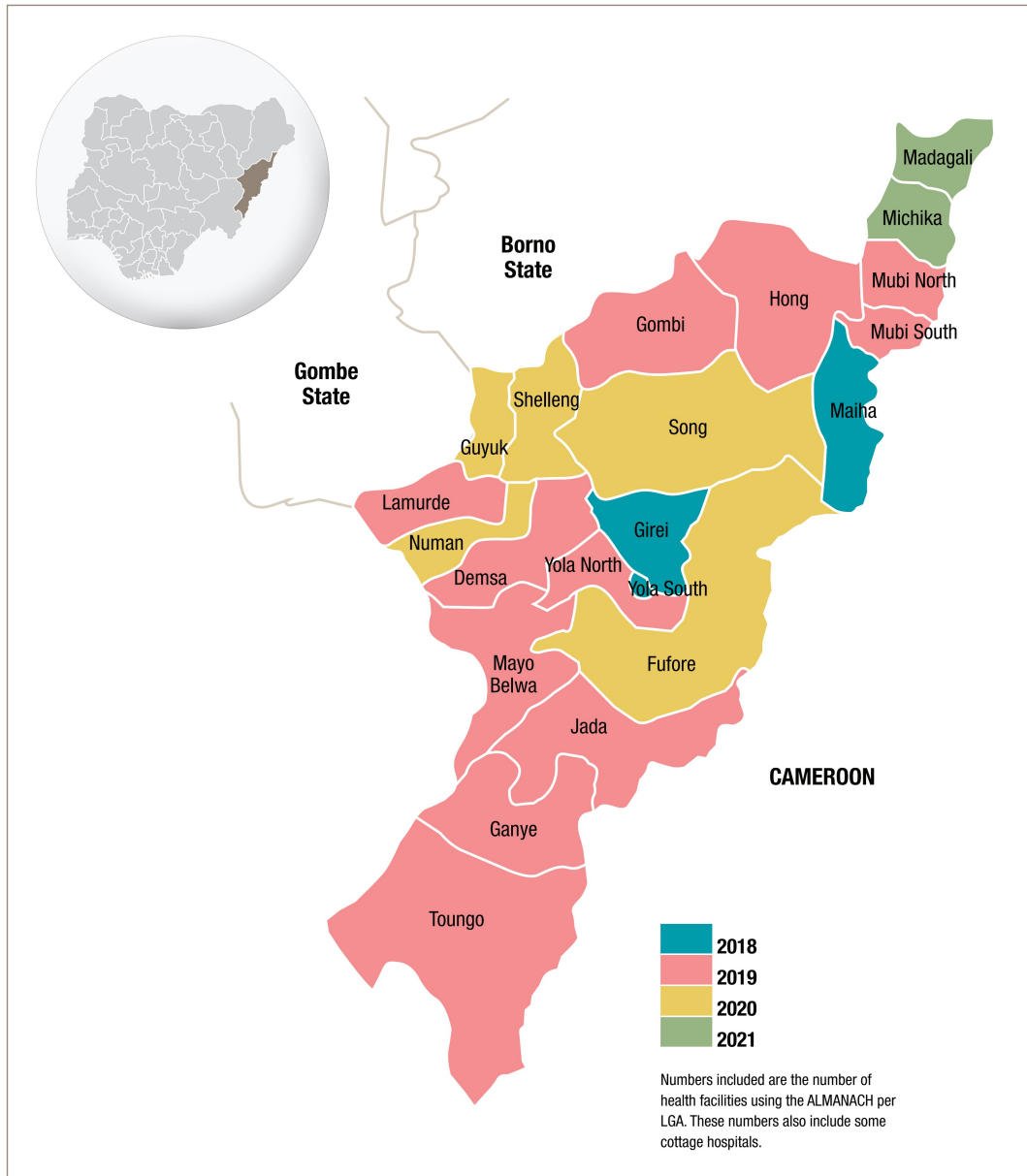
With ALMANACH, usage of antimicrobial drugs is more accurate, following standard treatment protocols

## HANDOVER FROM ICRC TO THE ADAMAWA STATE PRIMARY HEALTH CARE DEVELOPMENT AGENCY

The Adamawa State Primary Health Care Development Agency has played an instrumental role in integrating the tool into the health system thereby guaranteeing better service delivery for primary health care for children across the state. To ensure the projects sustainability and empower the local healthcare agents, the project will be handed over to the agency in 2021.

# GEOGRAPHIC REACH TO HEALTH FACILITIES

## ALMANACH: ROLL-OUT PLAN



**ADSPHCDA**  
 Dr. Halima Nyako Compound,  
 Kofare industrial layout, Yola  
[www.adsphcda.org.ng](http://www.adsphcda.org.ng)

[facebook.com/adsphcda/](https://facebook.com/adsphcda/)

**Swiss TPH**  
 Main Secretariat  
 Socinstrasse 57  
 4051 Basel  
 Phone +41 61 284 81 11  
 Fax +41 61 284 81 01  
[www.swisstph.ch](http://www.swisstph.ch)

@SwissTPH  
 swiss\_tph  
 Swiss Tropical and Public Health Institute [Swiss TPH]



**ICRC Abuja**  
 5 Queen Elizabeth Street  
 Asokoro District, FCT  
 P.M.B 7654  
 T +234 810 709 5551/2  
[abj\\_abuja@icrc.org](mailto:abj_abuja@icrc.org)  
[www.icrc.org](http://www.icrc.org)  
 © ICRC, October 2021

[facebook.com/ICRCinNigeria](https://facebook.com/ICRCinNigeria)  
[twitter.com/ICRC\\_Nigeria](https://twitter.com/ICRC_Nigeria)  
[instagram.com/icrc\\_afrique](https://instagram.com/icrc_afrique)



**ICRC**